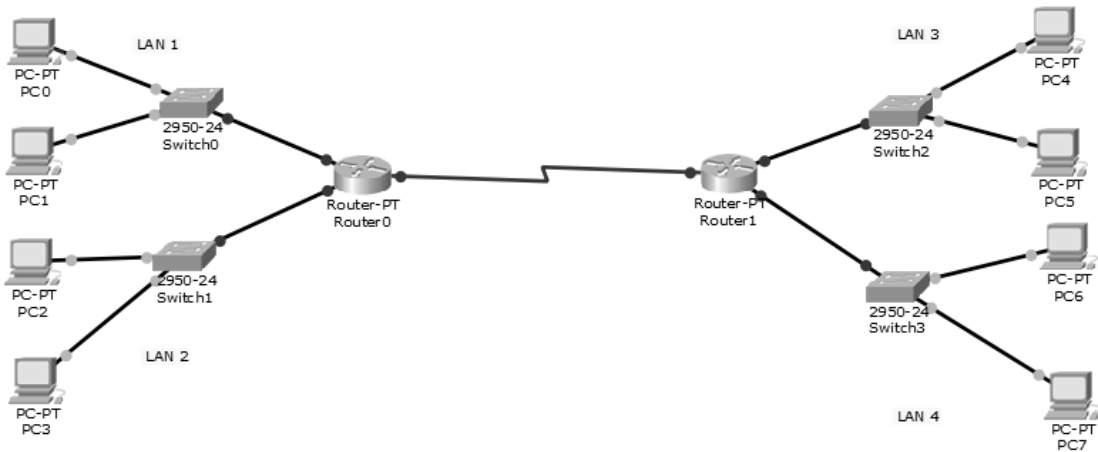


A
Install and configure DNS Services in a Domain Controller. Create different records in the forward and reverse lookup zones.

B
Configure Inter-VLAN Routing using a Multi-layer switch. Use the below network configurations.

PC	IP Address	Subnet Mask	Default Gateway	Switch Port Number	VLAN Number
PC1	192.168.10.11	255.255.255.0	192.168.10.1	1	10
PC2	192.168.10.12	255.255.255.0	192.168.10.1	2	10
PC3	192.168.20.11	255.255.255.0	192.168.20.1	3	20
PC4	192.168.20.12	255.255.255.0	192.168.20.1	4	20

C
Create a network topology as in the figure. Assign IP addresses properly and apply static routing to interconnect the systems.



D
Create a network topology as in the figure. Assign IP addresses properly, create VLANs and configure inter-VLAN routing using Router-on-a-stick method.

